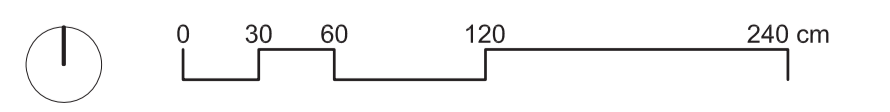
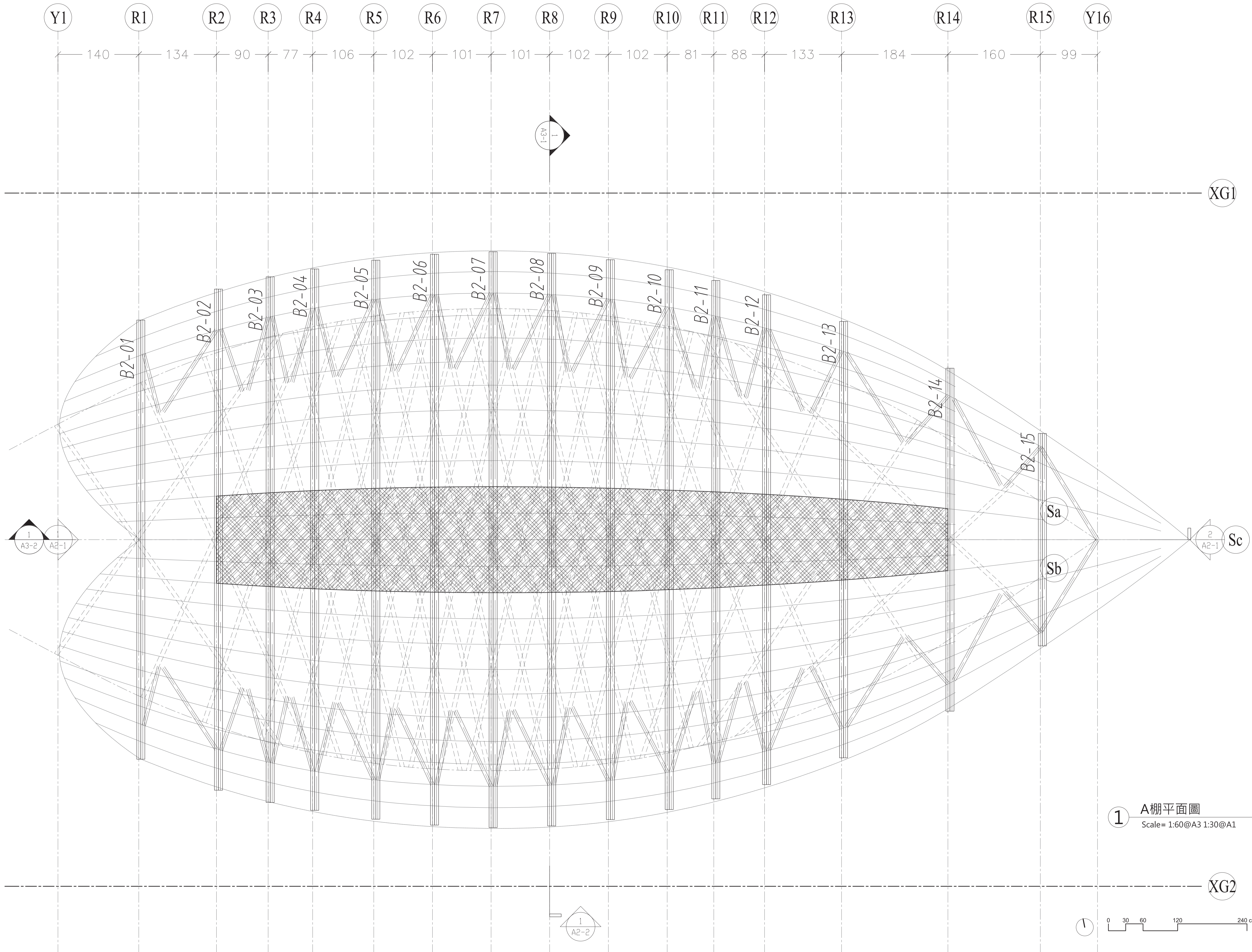


1 全區配置圖

Scale= 1:300@A3 1:150@A1

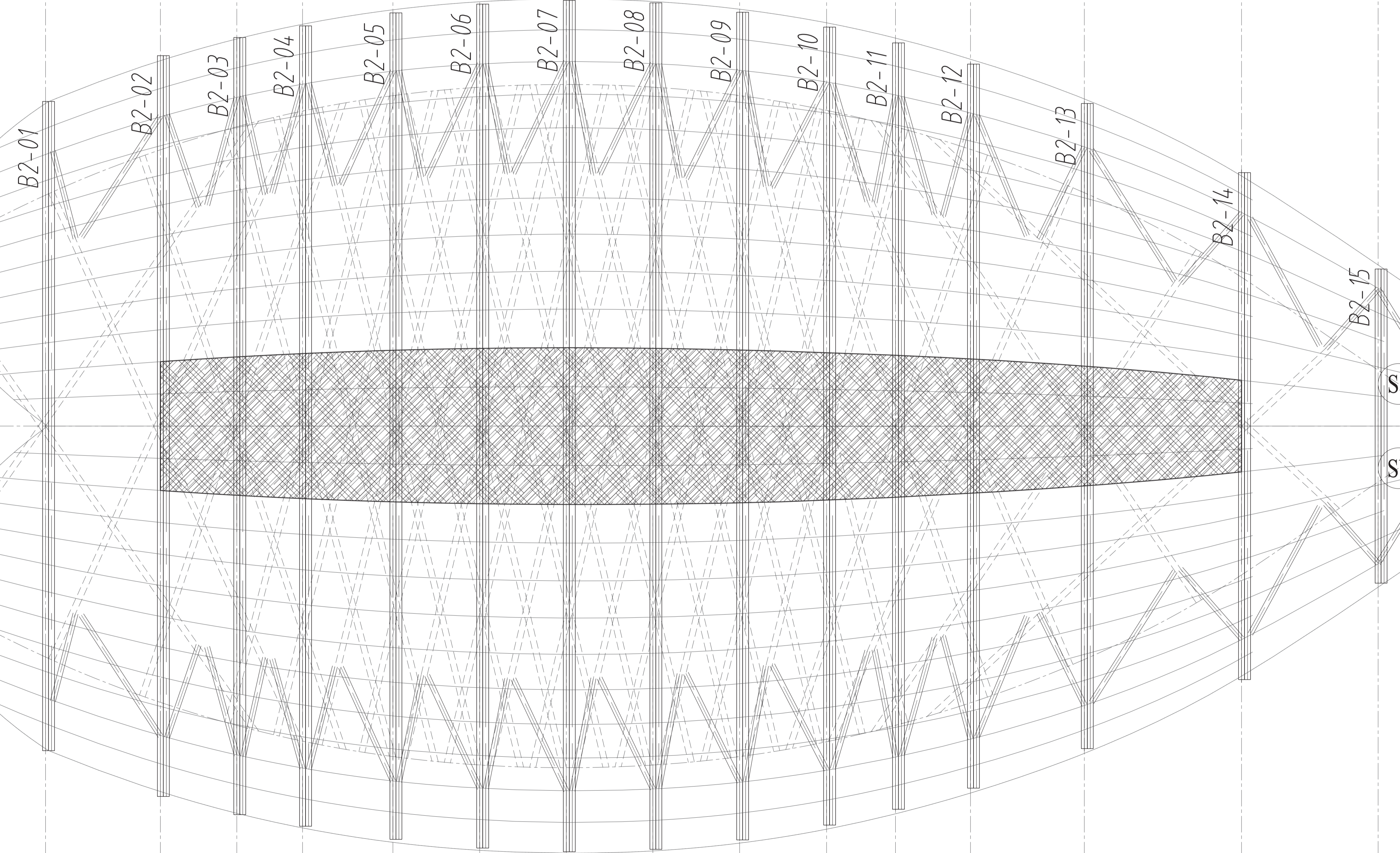




Y1 R1 R2 R3 R4 R5 R6 R7 R8 R9 R10 R11 R12 R13 R14 R15 Y16

140 134 90 77 106 102 101 101 102 102 81 88 133 184 160 99

XG1



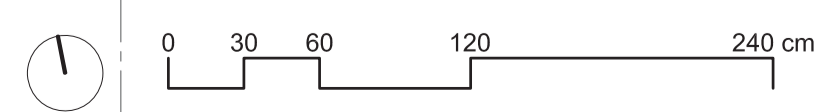
Sa

Sb

Sc

XG2

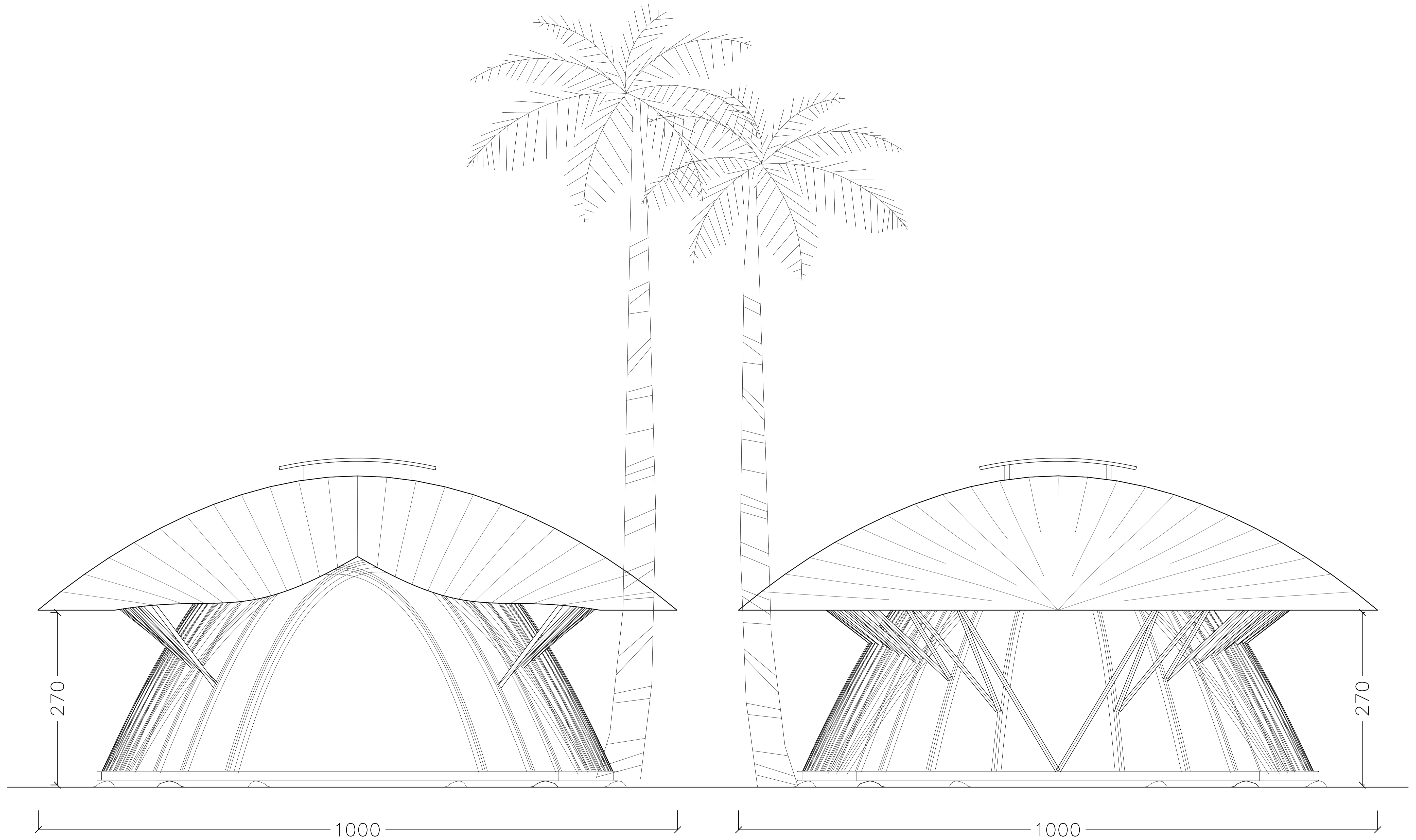
1 A棚平面圖  
Scale= 1:60@A3 1:30@A1



1  
A2-2

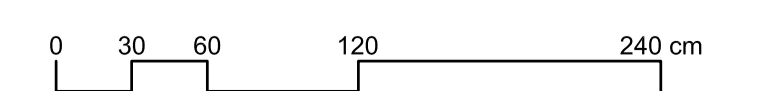
1  
A3-2 A2-1

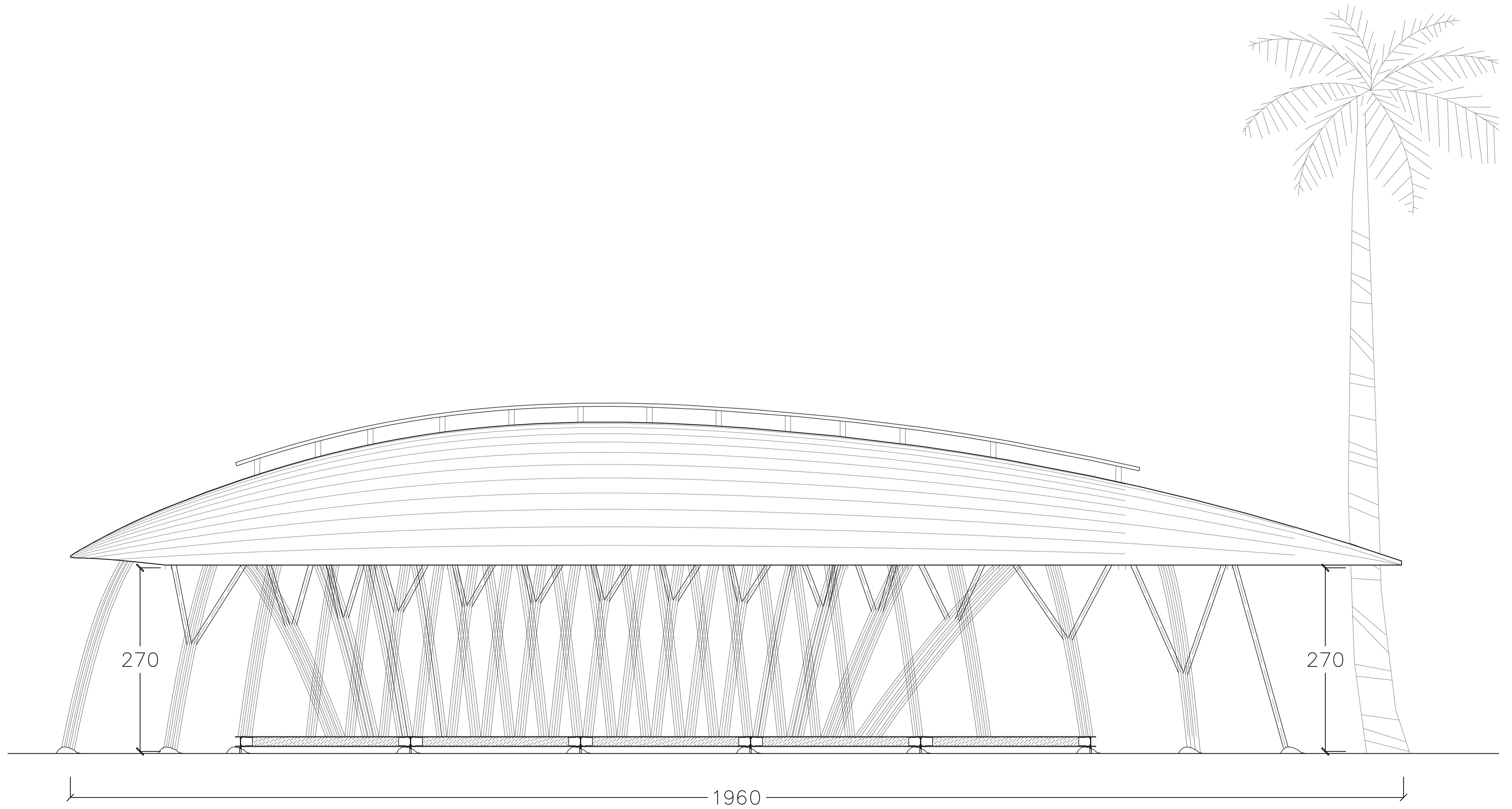
1  
A3-1



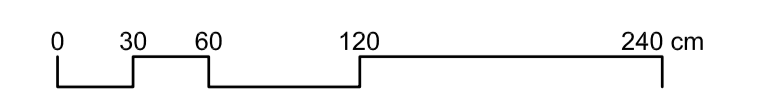
① A棚西側立面圖  
Scale= 1:60@A3 1:30@A1

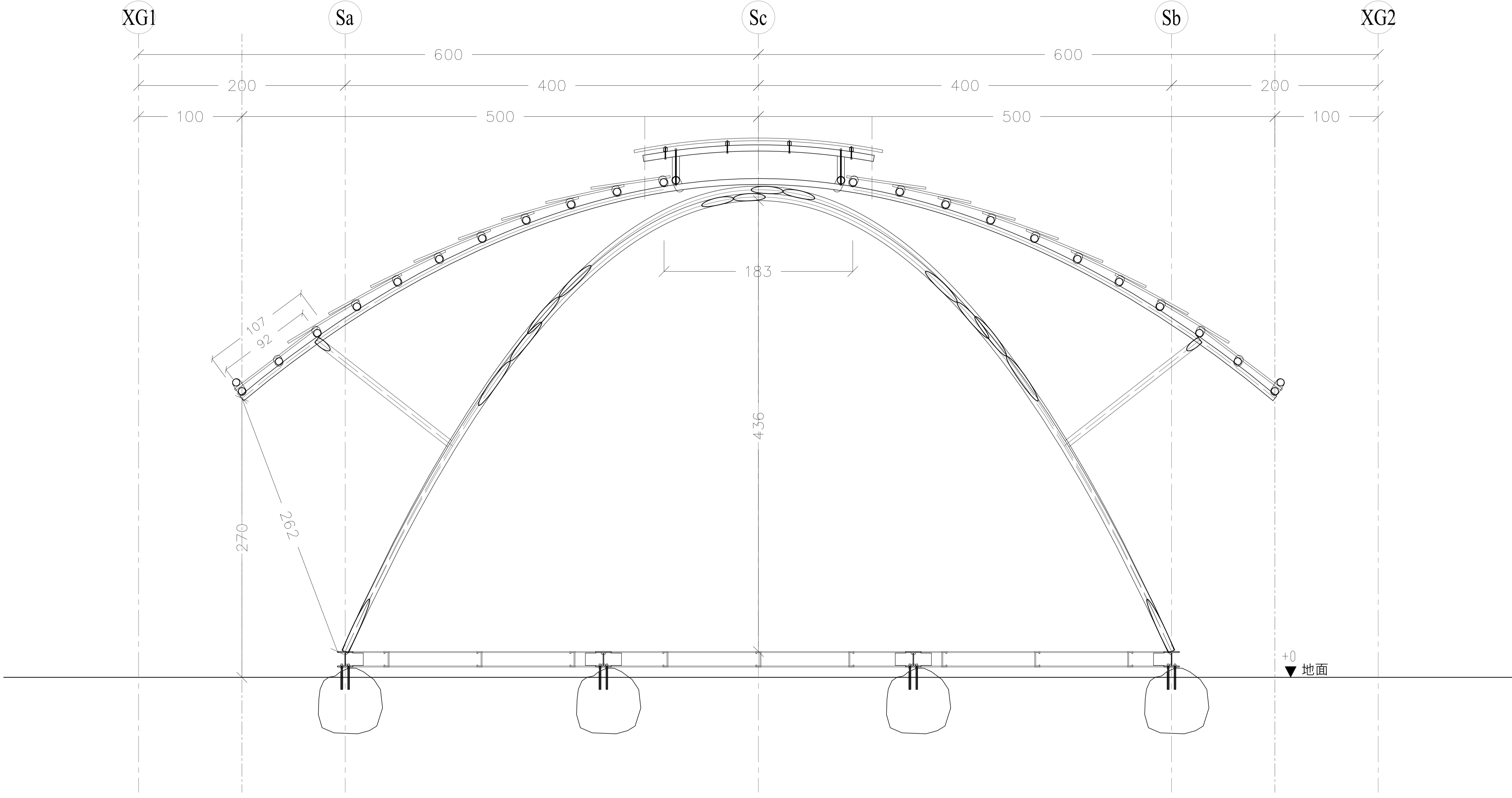
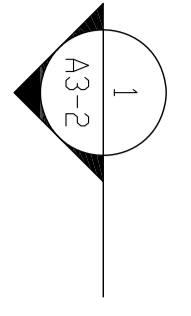
② A棚東側立面圖  
Scale= 1:60@A3 1:30@A1



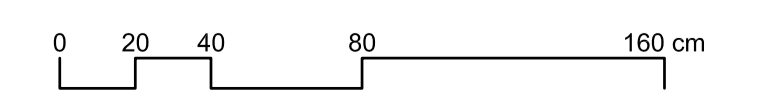


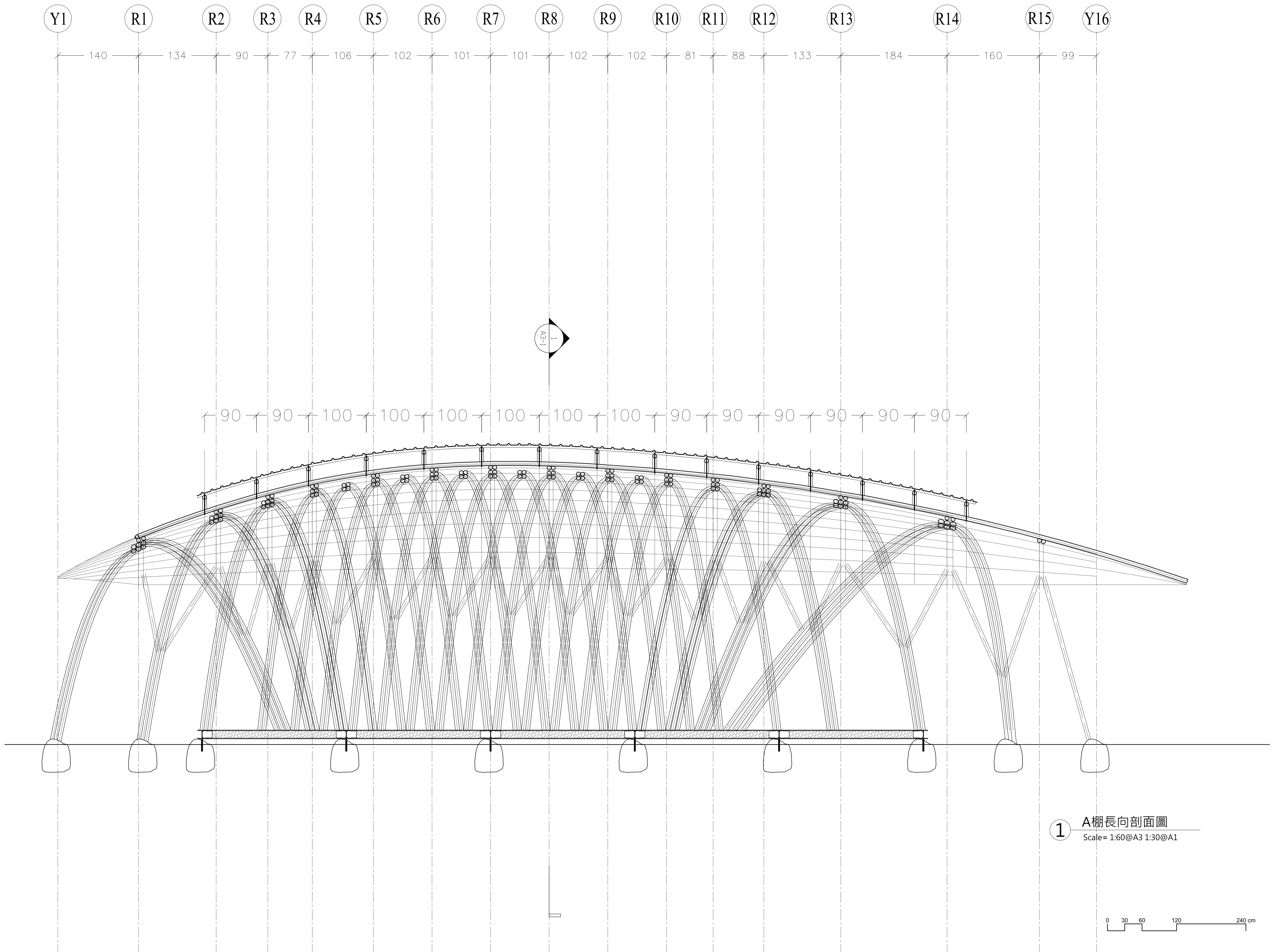
① A棚南側立面圖  
Scale= 1:60@A3 1:30@A1



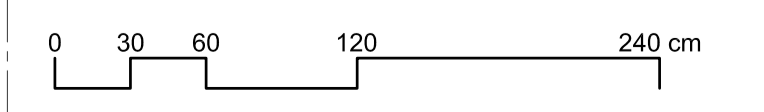


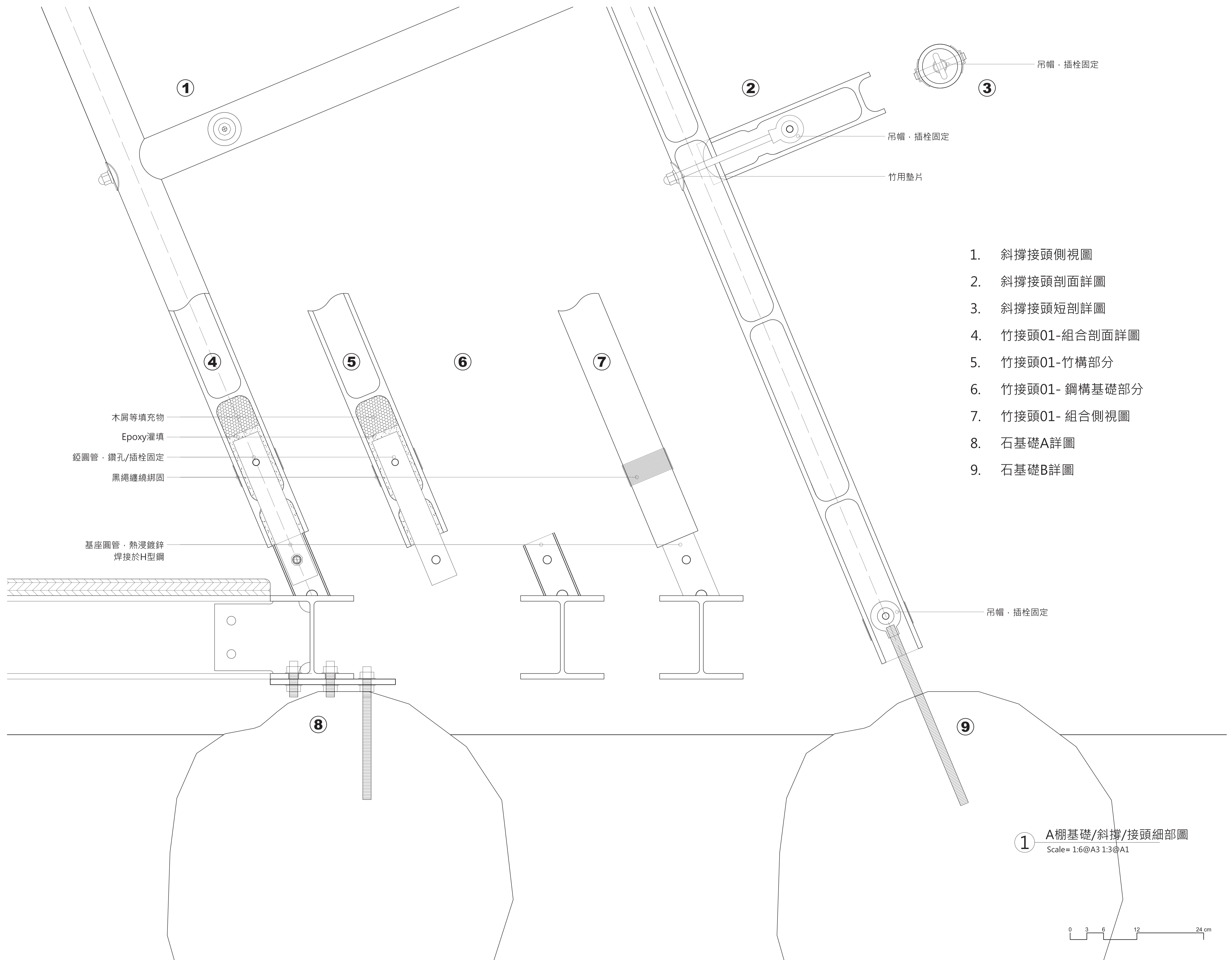
1 A棚短向剖面圖  
Scale= 1:40@A3 1:20@A1





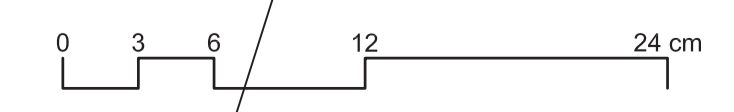
1 A棚長向剖面圖  
Scale= 1:60@A3 1:30@A1

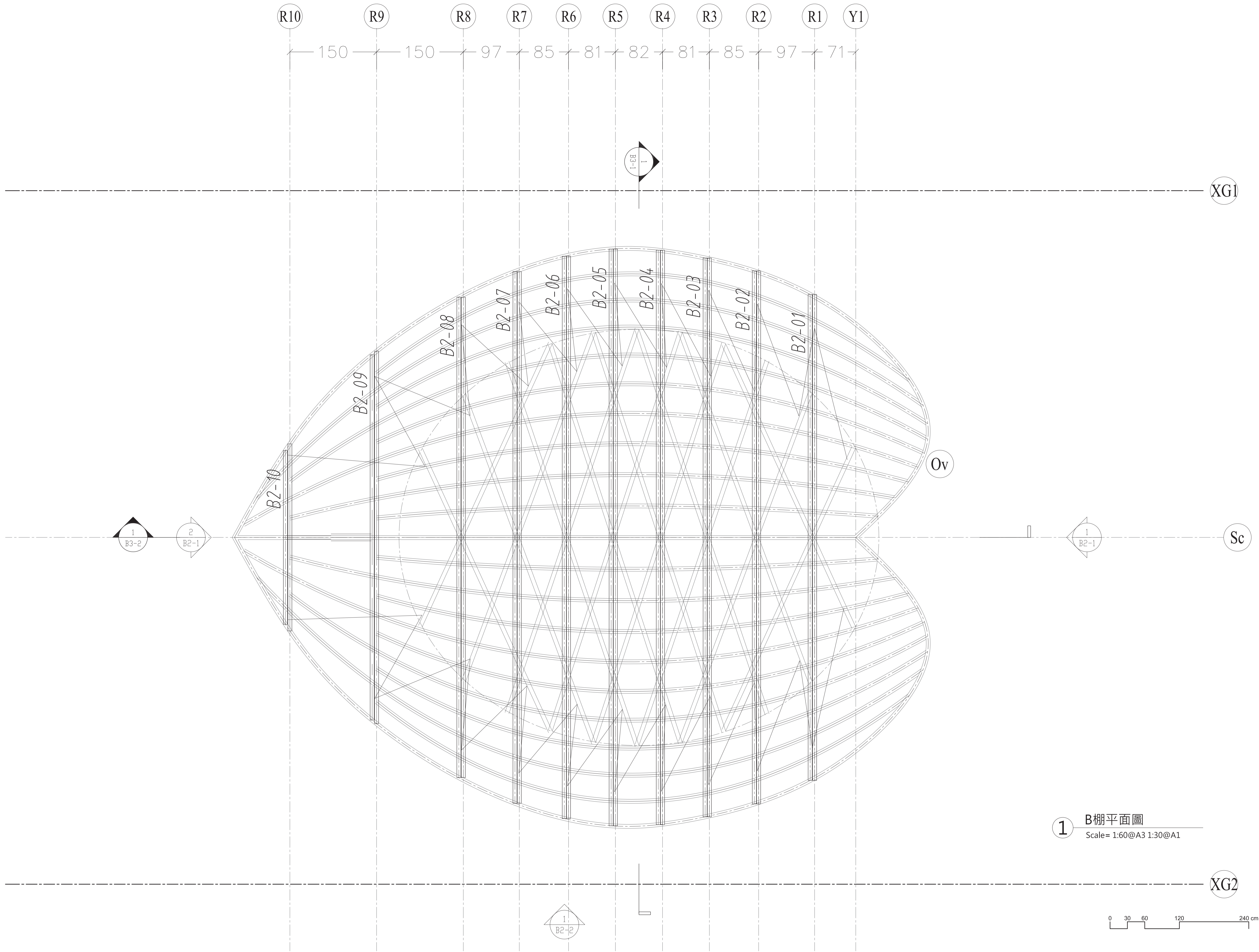




1. 斜撐接頭側視圖
2. 斜撐接頭剖面詳圖
3. 斜撐接頭短剖詳圖
4. 竹接頭01-組合剖面詳圖
5. 竹接頭01-竹構部分
6. 竹接頭01-鋼構基礎部分
7. 竹接頭01-組合側視圖
8. 石基礎A詳圖
9. 石基礎B詳圖

**1** A棚基礎/斜撐/接頭細部圖  
Scale= 1:6@A3 1:3@A1

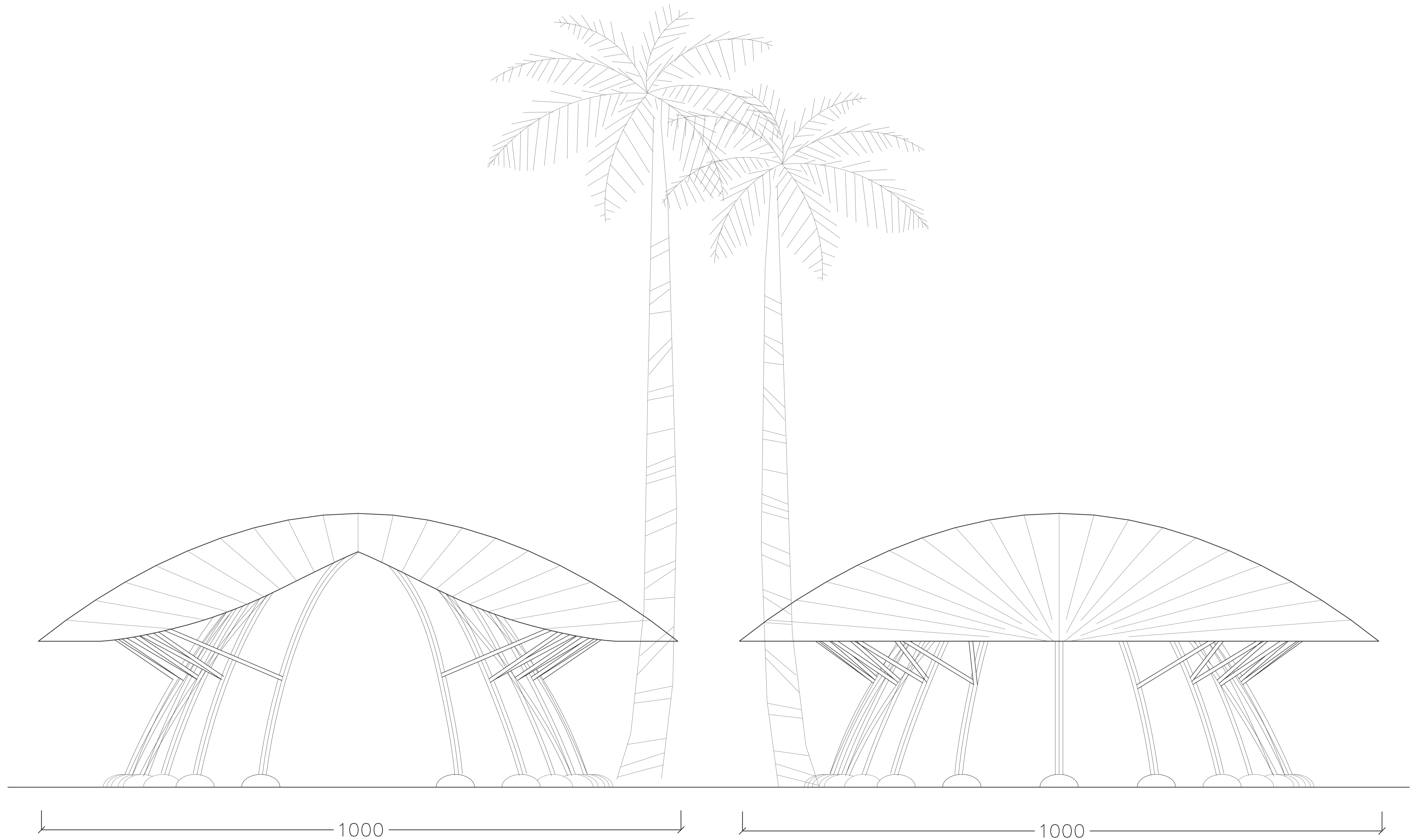




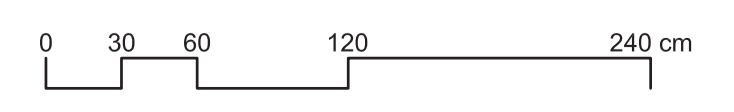
1 B棚平面圖  
Scale= 1:60@A3 1:30@A1

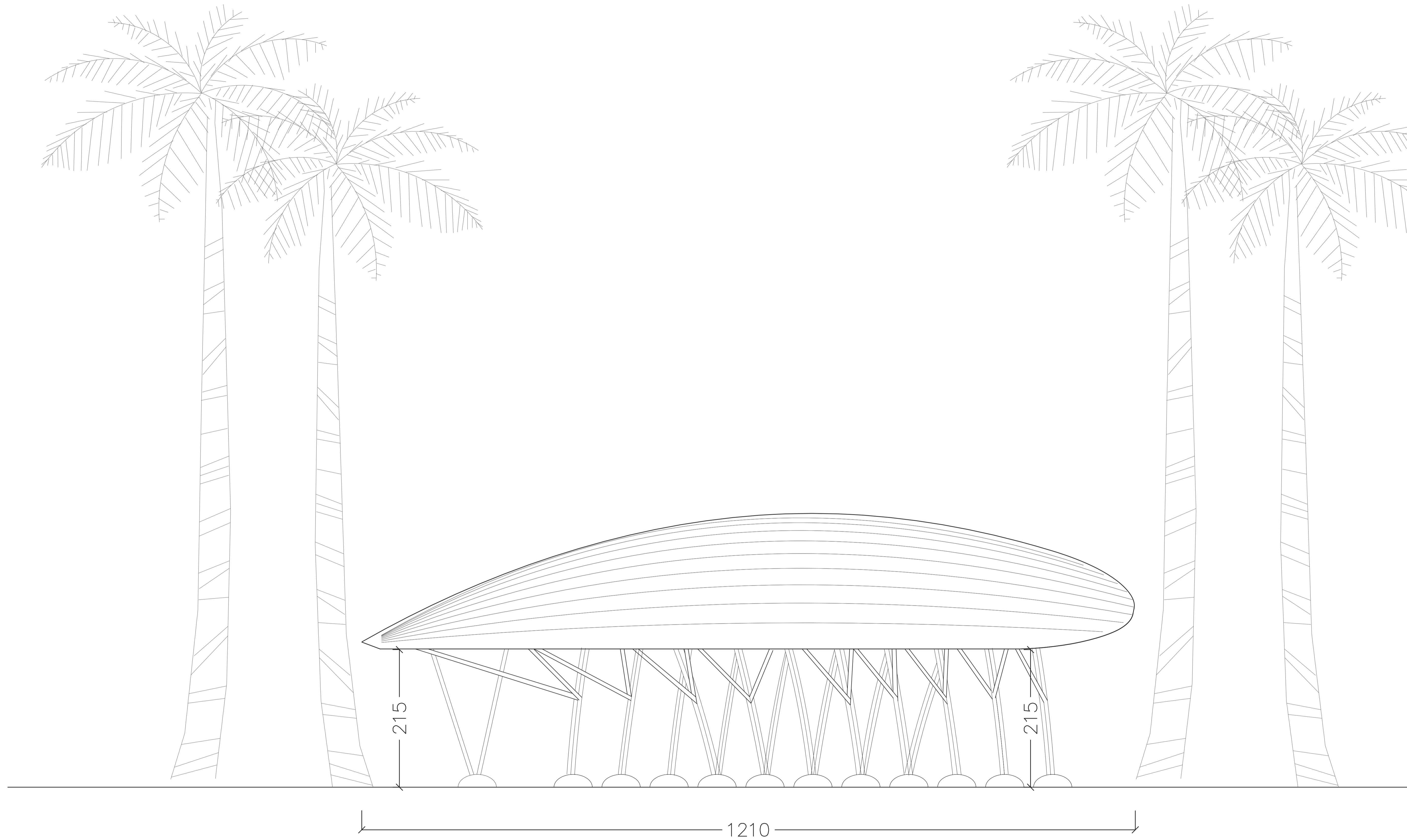




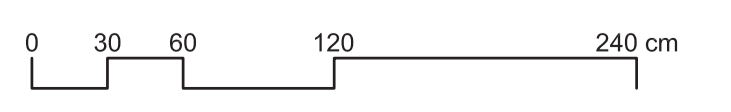


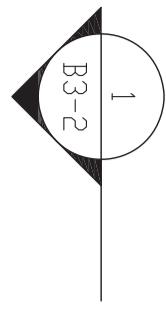
1 B棚正、背立面圖  
Scale= 1:60@A3 1:30@A1





1 B棚側面平面圖  
Scale= 1:60@A3 1:30@A1

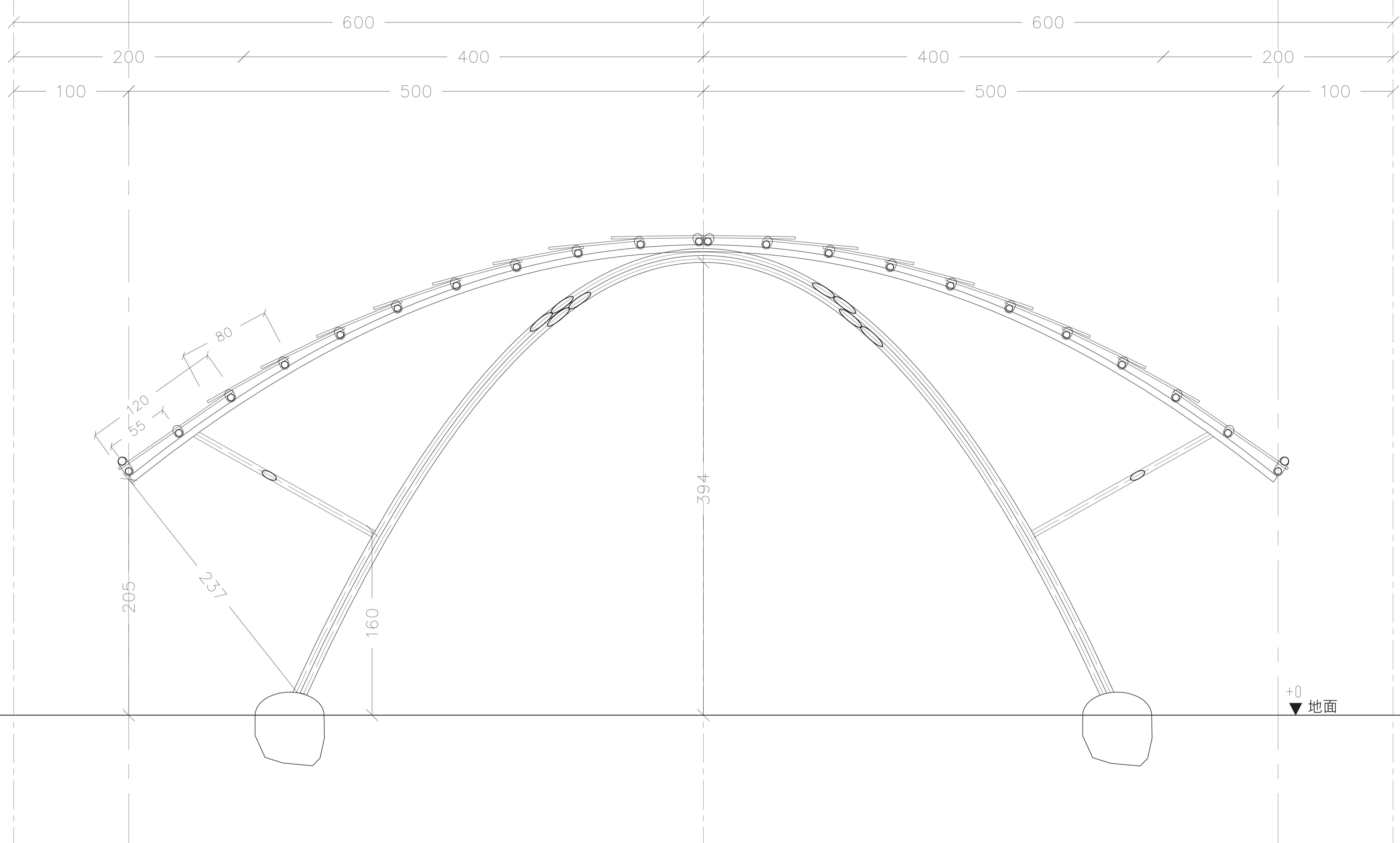




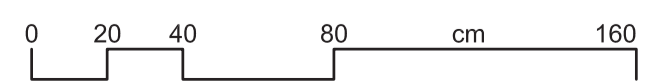
XG1

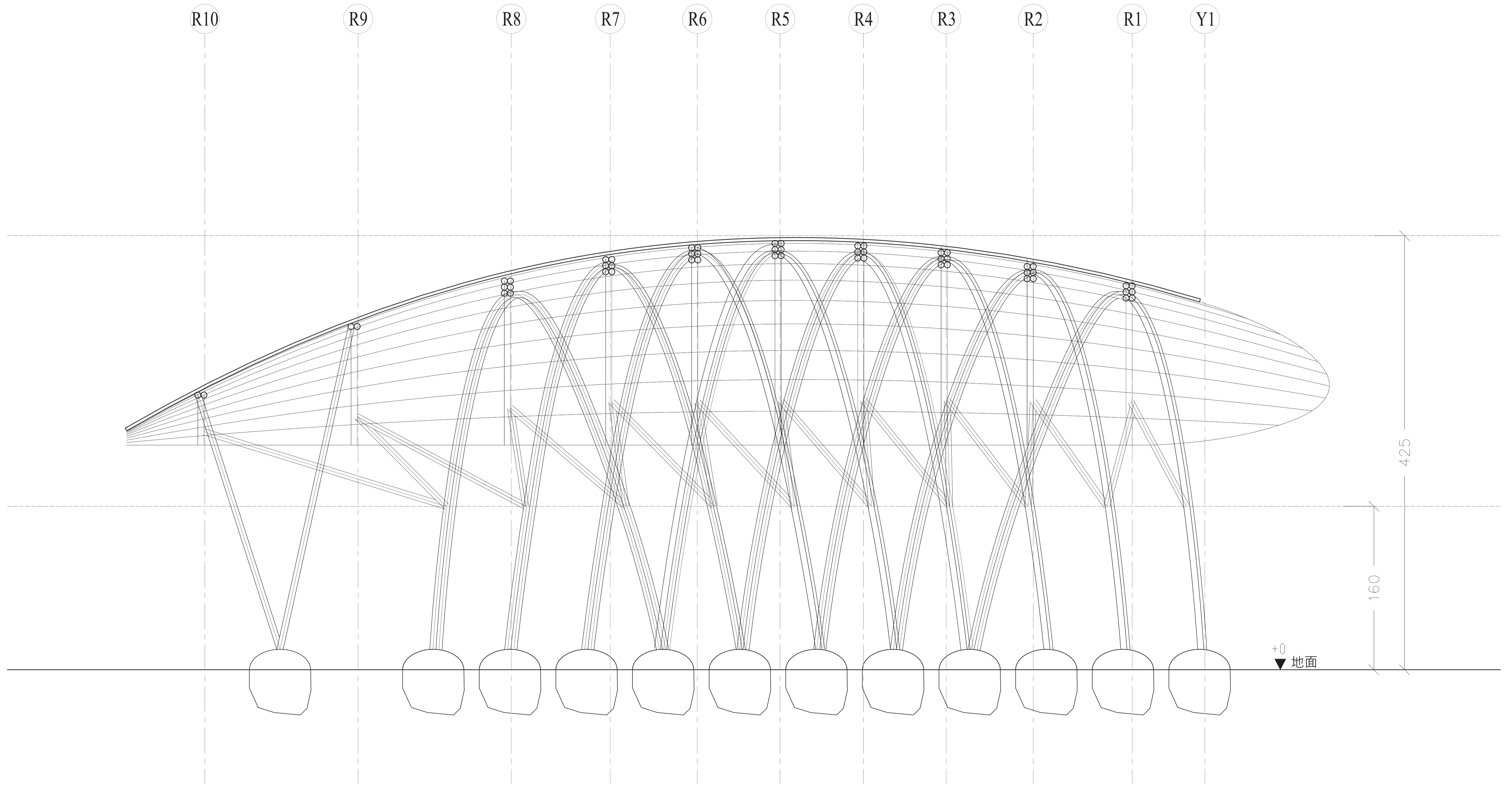
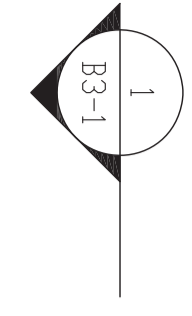
Sc

XG2



1 B棚短向剖面圖  
Scale= 1:40@A3 1:20@A1





1 B棚長向剖面圖  
Scale= 1:40@A3 1:20@A1

